

Laboratory Diagnosis of Dysfibrinogenemia

Mark T. Cunningham, MD; John T. Brandt, MD; Michael Laposata, MD, PhD; John D. Olson, MD, PhD

● **Dysfibrinogenemia is a coagulation disorder caused by a variety of structural abnormalities in the fibrinogen molecule that result in abnormal fibrinogen function. It can be inherited or acquired. The inherited form is associated with increased risk of bleeding, thrombosis, or both in the same patient or family. Traditionally, dysfibrinogenemia is diagnosed by abnormal tests of fibrin clot formation; the thrombin time and reptilase time are the screening tests, and the fibrinogen clotting activity–antigen ratio is the confirmatory test. The inherited form is diagnosed by demonstrating similar laboratory test abnormalities in family members, and if necessary by analysis of the fibrinogen protein or fibrinogen genes in the patient. The acquired form is diagnosed by demonstrating abnormal liver function tests and by ruling out dysfibrinogenemia in family members. This article reviews the laboratory testing of dysfibrinogenemia and presents an algorithm for sequential test selection that can be used for diagnosis.**

(*Arch Pathol Lab Med.* 2002;126:499–505)

Fibrinogen and its proteolytic cleavage product, fibrin, are critical plasma proteins with multiple functions in blood clotting. These functions include fibrin clot formation, factor XIIIa–mediated fibrin crosslinking, nonsubstrate thrombin binding, platelet aggregation, and fibrinolysis.^{1–3} A variety of structural abnormalities can occur in fibrinogen and can interfere with 1 or more of its hemostatic roles. Structurally abnormal fibrinogens are collectively termed *dysfibrinogenemias*. This article reviews the clinical features, pathophysiology, and laboratory testing of inherited and acquired dysfibrinogenemia.

INHERITED DYSFIBRINOGENEMIA

Nomenclature

Inherited dysfibrinogenemia is caused by mutations in the coding region of the fibrinogen A α , B β , or γ gene. Dysfibrinogenemias are named after the city where the patient lives, or after the city of the hospital where the patient was evaluated. Roman numerals are added after

the city name if there is more than 1 dysfibrinogen from the same city. The term *hypodysfibrinogenemia* is used when the inherited dysfibrinogen is associated with low fibrinogen antigen in plasma. Approximately 245 fibrinogen gene abnormalities with unique name designations have been reported to date. An online database of fibrinogen mutations that is periodically updated is accessible at http://www.geht.org/pages/database_ang.html.

Clinical Features

The prevalence of inherited dysfibrinogenemia among the general population is unknown; however, the prevalence among patients with a history of venous thrombosis is 0.8%.⁴ The pattern of inheritance is almost always autosomal dominant.⁵ Most patients have no history of bleeding or thrombosis (55%), while others develop bleeding (25%) or thrombosis (20%).⁶ Interestingly, 27% of patients who have had a thrombotic event also have a history of bleeding.⁴ Asymptomatic dysfibrinogenemia is usually brought to clinical attention because of an abnormal laboratory test (ie, thrombin time).

Bleeding manifestations include epistaxis, easy bruising, menorrhagia, hematomas, hemarthrosis, postoperative bleeding, postpartum bleeding, antepartum bleeding, and delayed wound healing.⁵ Most bleeding episodes are mild to moderate in severity. Thrombotic manifestations include lower extremity venous thrombosis, thrombophlebitis, pulmonary embolism, arterial thrombosis, and a combination of arterial and venous thrombosis.⁴

Pathophysiology

The pathophysiologic mechanism of bleeding in most cases appears to be defective fibrin clot formation. This defect is caused by impaired thrombin-mediated release of fibrinopeptide A and/or fibrinopeptide B from fibrinogen, as well as impaired fibrin monomer polymerization.⁵

The pathophysiologic basis of thrombosis (ie, thrombophilia) in dysfibrinogenemia has been reviewed.^{4,6–9} Two general mechanisms have been proposed. The first is impaired anticoagulant function. This impairment is caused by mutations that lead to defective thrombin binding to low-affinity nonsubstrate binding sites on fibrin. This defect presumably results in the release of thrombin into the circulation, leading to increased fibrin clot formation and a tendency toward pathologic thrombosis.

The second mechanism is impaired profibrinolytic function. This impairment is caused by mutations that lead to (1) defective binding of profibrinolytic proteins (tissue plasminogen activator, plasminogen) to fibrin or (2) resistance of fibrin to the digestive action of plasmin. These defects cause impaired fibrinolysis and a tendency toward

Accepted for publication November 28, 2001.

From the Department of Pathology, University of Kansas Medical Center, Kansas City (Dr Cunningham); Eli Lilly Corporate Center, Indianapolis, Ind (Dr Brandt); the Division of Clinical Laboratories, Massachusetts General Hospital, Boston (Dr Laposata); and the Department of Pathology, University of Texas Health Sciences Center, San Antonio (Dr Olson).

Reprints: Mark T. Cunningham, MD, University of Kansas Medical Center, Department of Pathology, 3901 Rainbow Blvd, Kansas City, KS 66160 (e-mail: mcunningham@kumc.edu).

Fibrinogen

Inherited Lesions Associated with Thrombophilia

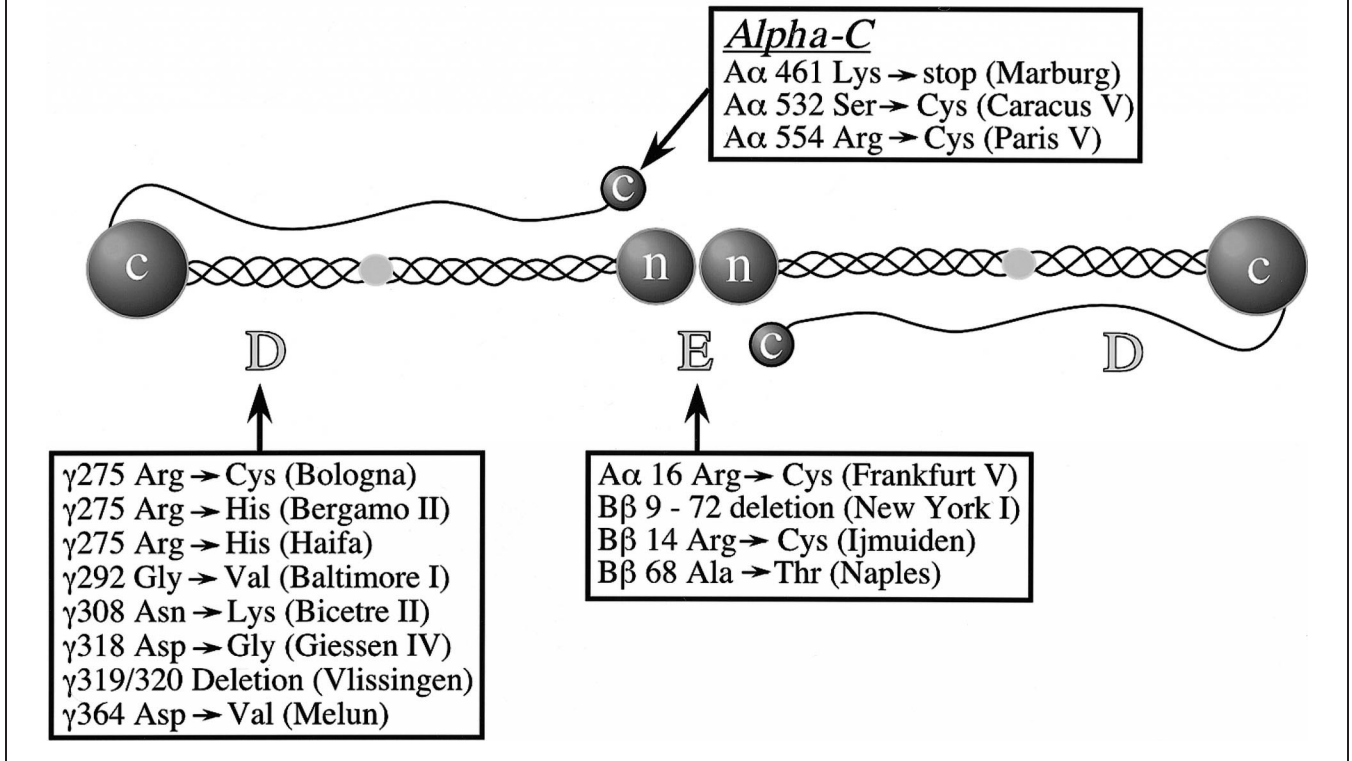


Figure 1. Diagram of the fibrinogen molecule and location of mutations associated with thrombophilia. Fibrinogen is composed of 2 half molecules, each containing 1 α , 1 β , and 1 γ chain. Each half molecule associates at the amino terminus (n) to form the central E domain. Each half molecule also has a terminal D domain that contains the carboxy terminus of 1 β and 1 γ chain (c), and a terminal alpha-C domain that contains the carboxy terminus of 1 α chain (c). Mutations that are most likely associated with thrombosis (data from Haverkate and Samama⁴) are shown for each domain. The name designation for each mutation is shown in parentheses.

pathologic thrombosis. The specific mutations that are most likely associated with thrombosis are shown in Figure 1.

ACQUIRED DYSFIBRINOGENEMIA

Clinical Features

Acquired dysfibrinogenemia is usually caused by disease of the liver or biliary tract. The specific disease associations include cirrhosis,¹⁰ chronic active liver disease,¹¹ acute liver failure,¹¹ acetaminophen overdose,¹² choledochal cyst of the bile duct,¹³ and miscellaneous causes of obstructive jaundice.¹¹ The prevalence of dysfibrinogenemia is higher in patients with liver disease (76% to 86%) than in those with obstructive jaundice (8%).¹¹ One case report associated acquired dysfibrinogenemia with mithramycin administration.¹⁴

Acquired dysfibrinogenemia is also a paraneoplastic marker of certain malignancies, such as hepatoma and renal cell carcinoma.¹⁵⁻¹⁸ The dysfibrinogen is usually present at the time of diagnosis and disappears when the tu-

mor is in remission. The dysfibrinogen can also reappear after tumor relapse.

Pathophysiology

The mechanism of acquired dysfibrinogenemia involves increased sialylation of carbohydrate side chains of the fibrinogen molecule.^{16,19,20} The additional sialic acid residues are localized to the β and γ chains.²⁰ This chemical change increases the net negative charge of fibrinogen, which promotes charge repulsion between fibrin monomers and decreases the rate of fibrin polymerization.²¹

In vitro data suggest that the mechanism of cancer-associated dysfibrinogenemia involves the synthesis and secretion of abnormal fibrinogen by tumor cells. Several tumor cell lines are capable of fibrinogen synthesis, including HepG2 human hepatoma,²² ME-180 human uterine cervix carcinoma,²³ and MCF-7 human breast carcinoma.²⁴ In the case of MCF-7 cells, the fibrinogen β chain is missing an amino terminal peptide fragment, and the final molecule is defective in assembly.

It is unknown if acquired dysfibrinogenemia is an independent risk factor for bleeding or thrombosis. Only rarely has bleeding been reported.¹⁴ This is a difficult issue to resolve, in part because patients with hepatobiliary disease develop a variety of hemostatic abnormalities that could contribute to bleeding or thrombotic risk.²⁵

Laboratory Diagnosis

A laboratory testing algorithm for the diagnosis of dysfibrinogenemia is shown in Figure 2. It is based in part on criteria established by the International Society of Thrombosis and Haemostasis (Subcommittee on Fibrinogen; Scientific and Standardization Committee).⁴ Testing begins with sensitive but nonspecific screening tests and then proceeds to more specific confirmatory tests. This algorithm can be used in patients with bleeding or thrombosis not explained by more common acquired or inherited entities.

SCREENING TESTS

Thrombin Time

The primary screening test is the thrombin time. The thrombin time measures the rate of fibrin clot formation after the addition of a standard concentration of thrombin to citrated plasma.²⁶ Thrombin mediates fibrin clot formation by cleaving 2 molecules each of fibrinopeptide A and fibrinopeptide B from fibrinogen, producing fibrin monomer. Fibrin monomer then polymerizes in a linear and lateral fashion to form the fibrin clot. Dysfibrinogens prolong the thrombin time by inhibiting fibrinopeptide A and/or B release, or by inhibiting fibrin monomer polymerization.⁴ Only 1 dysfibrinogen has been reported to shorten the thrombin time.⁶

The sensitivity of the thrombin time in dysfibrinogenemia is not well characterized. The specificity of the thrombin time is poor (Table). Some of the conditions listed in the Table, such as low or high plasma fibrinogen concentration, are common in hospitalized patients and need to be considered when interpreting abnormal results. If heparin contamination is a possibility, then protamine or heparinase can be added to plasma to neutralize heparin's effect on the thrombin time.

Reptilase Time

An alternative screening test is the reptilase time.⁴ This test measures the rate of fibrin clot formation after the addition of reptilase to citrated plasma. Reptilase is a snake venom enzyme obtained from *Bothrops jararaca* or *Bothrops atrox*. Its mechanism of action differs from thrombin in that only fibrinopeptide A, and not fibrinopeptide B, is cleaved from fibrinogen.^{27,28}

Dysfibrinogens prolong the reptilase time by inhibiting either fibrinopeptide A release or fibrin monomer polymerization. One advantage of this test is that it is unaffected by heparin. The diagnostic sensitivity of the reptilase time is unknown. Some authorities recommend that both the thrombin time and reptilase time be used for screening of dysfibrinogenemia.²⁹

CONFIRMATORY TEST

Fibrinogen Activity–Antigen Ratio

If either the thrombin time or the reptilase time is positive for dysfibrinogen, then the confirmatory test is the fibrinogen activity–antigen ratio.^{4,30} A fibrinogen activity–

antigen ratio that is below the reference range is considered positive for the diagnosis. The sensitivity and specificity values of this test are not well characterized. Its use is based primarily on tradition.

The fibrinogen activity is based on the measurement of fibrin polymerization function and is most commonly determined by the Clauss method. The Clauss method measures the rate of clot formation after adding a high concentration of thrombin to citrated plasma.³¹ The fibrinogen activity of the patient sample is derived from a standard curve relating the clotting time to plasma standards of known fibrinogen activity.

An alternative approach for measuring fibrinogen activity is the prothrombin time–based method.³² The fibrinogen activity of the patient sample is determined from a standard curve relating the maximum turbidity of the clot (derived from the prothrombin time polymerization curve) to plasma standards of known fibrinogen activity. This test has not been validated for the diagnosis of dysfibrinogenemia, so it cannot be recommended at this time.

The fibrinogen antigen concentration can be determined by immunologic (enzyme-linked immunosorbent assay, radial immunodiffusion),^{30,33} precipitation (heat, sulphite),^{33–35} and thrombin clotting methods.^{33,34} Some of these approaches have sources of error that need to be taken into consideration. For example, fibrin degradation products can cause falsely elevated fibrinogen antigen values when using sulphite precipitation,³⁵ thrombin clotting,³⁵ and some immunologic methods.³³ Falsely decreased fibrinogen antigen values can occur with the heat precipitation method in the presence of fibrin degradation products,³³ cryoglobulins,³⁴ and high plasma viscosity.³⁴

There are some preanalytic and analytic issues to be aware of regarding the fibrinogen activity–antigen ratio. First, the activity and antigen assays should be performed on the same sample because fibrinogen levels can fluctuate from day to day.^{36,37} Second, the activity–antigen ratio should be interpreted against a method-specific reference range because fibrinogen antigen and activity levels are method dependent.³⁸ These variables can be controlled if a single laboratory performs the activity and antigen assays on the same sample and then reports the ratio result along with a method-specific reference range.

Thrombin Time 1:1 Mixing Study

Some cases of acquired dysfibrinogenemia have a normal fibrinogen activity–antigen ratio, despite having a prolonged thrombin time.^{14,39} To document that the cause of the abnormal thrombin time is due to a fibrinogen defect, one can perform a modification of the thrombin time 1:1 mixing study.¹⁴ The modified test is performed in 2 parts. In part 1, a thrombin time is determined on a 1:1 mix of patient plasma and pooled normal plasma. In part 2, a thrombin time is determined on a 1:1 mix of defibrinated patient plasma and pooled normal plasma. The patient plasma is defibrinated by heating at 56°C for 10 minutes. The control for part 2 is a 1:1 mix of buffered saline and pooled normal plasma.

In acquired dysfibrinogenemia, the thrombin time 1:1 mix is prolonged in part 1, and normal (corrected) in part 2. The basis for a prolonged thrombin time in part 1 is that the dysfibrinogen inhibits fibrin clot assembly of normal fibrinogen. The basis for a corrected thrombin time in part 2 is that the inhibitory dysfibrinogen has been re-

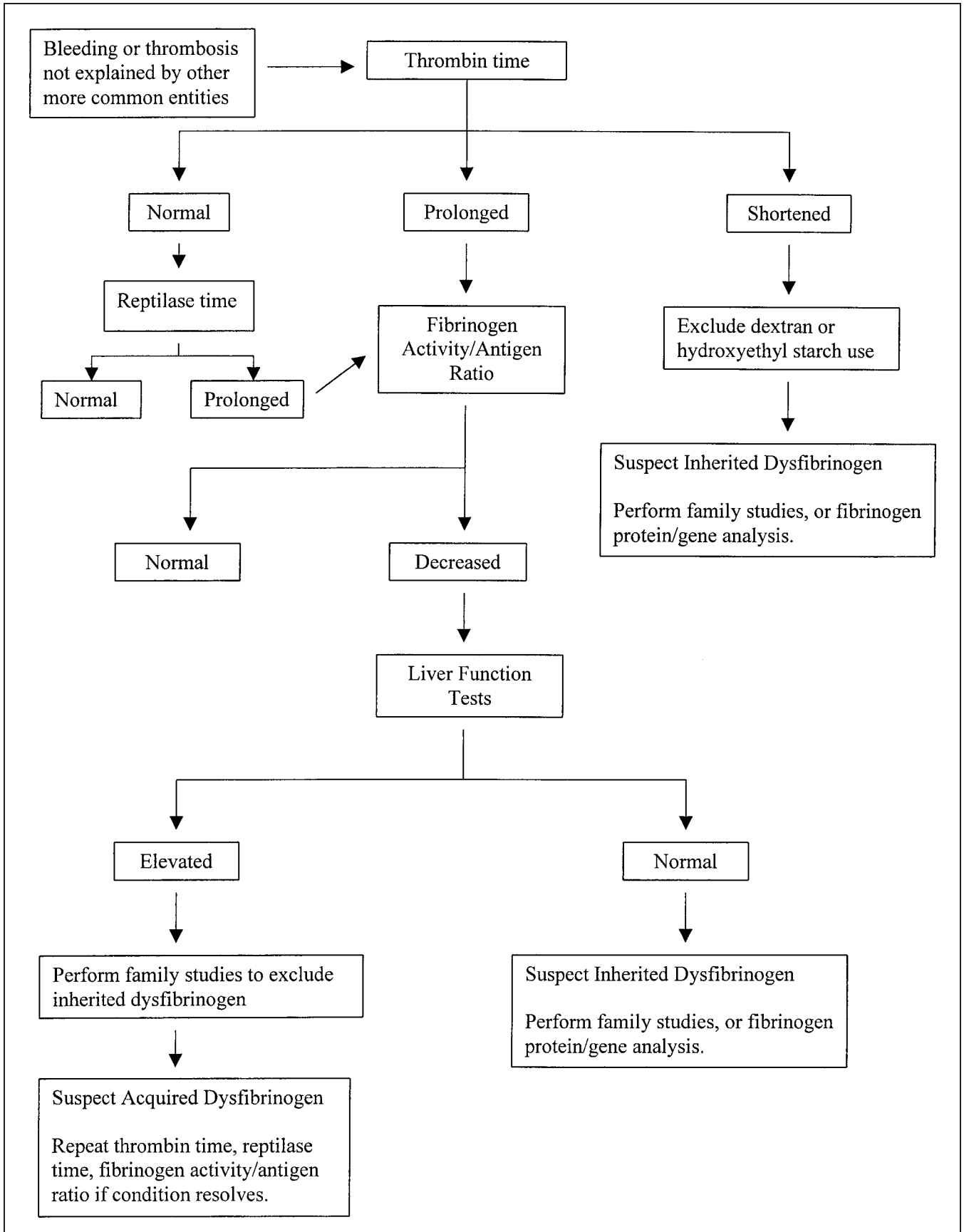


Figure 2. Laboratory testing algorithm for diagnosis of dysfibrinogenemia.

Effect of Various Disorders and Substances on Thrombin Time

| Disorder/Substance | Thrombin Time | Mechanism of Effect |
|---|---------------|---|
| Amyloidosis, AL type ⁴² | Prolonged | Inhibition of fibrin clot formation; identity of inhibitor unknown |
| Drugs | | |
| Argatroban ⁴³ | Prolonged | Inhibition of thrombin |
| Bovine thrombin, topical ⁴⁴⁻⁴⁶ | Prolonged | Development of alloantibodies against bovine thrombin; may crossreact with human thrombin |
| Dextran ^{47,48} | Shortened | Increased fibrin monomer polymerization |
| Heparin ⁴⁹ | Prolonged | Inhibition of thrombin |
| Hirudin, hirugen, hirulog ^{50,51} | Prolonged | Inhibition of thrombin |
| Hydroxyethyl starch ⁵² | Shortened | Unknown |
| Tissue plasminogen activator ⁵³ | Prolonged | Inhibition of fibrin monomer polymerization due to production of fibrin degradation products |
| Urokinase ⁵³ | Prolonged | Inhibition of fibrin monomer polymerization due to production of fibrin degradation products |
| Dysfibrinogenemia | | |
| Inherited⁶ | Prolonged | Inhibition of fibrinopeptide A release; inhibition of fibrinopeptide B release; inhibition of fibrin monomer polymerization |
| | Shortened | Unknown |
| Acquired ²¹ | Prolonged | Inhibition of fibrin monomer polymerization |
| Fibrin degradation products ⁵⁴⁻⁵⁶ | Prolonged | Inhibition of fibrin monomer polymerization |
| Fibrinogen | | |
| High plasma levels ⁵⁷ | Prolonged | Unknown |
| Low plasma levels ⁵⁸ | Prolonged | Decreased fibrinogen substrate |
| Monoclonal immunoglobulins ⁵⁹⁻⁶¹ | Prolonged | Inhibition of thrombin; inhibition of fibrin monomer polymerization |
| Radiocontrast agents⁶² | Prolonged | Inhibition of fibrin monomer generation and polymerization |
| Diatrizoate, ioxaglate, ioxithalamate, iopamidol, metrizamide | | |

moved by heat precipitation. The sensitivity, specificity, and predictive values of this test are unknown.

Fibrinogen Electrophoresis

One-dimensional and 2-dimensional gel electrophoresis are useful in confirming an inherited dysfibrinogen if the mutation alters the apparent molecular weight or isoelectric point of the A α , B β , or γ chain.^{40,41} One-dimensional electrophoresis separates polypeptides based on apparent molecular weight. Two-dimensional electrophoresis separates polypeptides based on apparent molecular weight in the first dimension and isoelectric point in the second dimension. These analyses can be performed either on purified fibrinogen or on plasma if the electrophoresis is followed by immunoblotting with fibrinogen-specific antibodies.

An example in which electrophoresis has been used is fibrinogen Osaka V (γ 375: Gly \rightarrow Arg), which causes a defect in high-affinity calcium binding. In the presence of calcium, fibrinogen Osaka V has a slower migrating γ chain compared to the normal γ chain on 1-dimensional electrophoresis. This difference in protein migration rate allows detection of both the heterozygous and homozygous states.

Distinguishing the Acquired and Inherited Forms

Acquired dysfibrinogenemia is typically diagnosed by demonstrating (1) abnormal laboratory tests of hepatocellular or cholestatic function (ie, aspartate aminotransferase, alanine aminotransferase, alkaline phosphatase, γ -glutamyltransferase, direct bilirubin) and (2) normal throm-

bin time and/or reptilase time in family members. The diagnosis can be further substantiated by repeat testing after the condition resolves to show that fibrinogen function returns to normal.¹⁷ The possibility of an inherited defect should be considered if fibrinogen dysfunction persists after resolution of the hepatobiliary disease.

If liver function tests are normal, then the dysfibrinogenemia is most likely inherited. The inherited nature of the disease can be confirmed by demonstrating a similar abnormality in a family member, detecting a protein abnormality by fibrinogen electrophoresis, or by identifying a mutation within 1 of the 3 fibrinogen genes by molecular genetic analysis.⁴ Fibrinogen electrophoresis and molecular genetic analysis of fibrinogen genes are beyond the capability of most clinical laboratories, so this testing is generally referred to laboratories that have a special interest in dysfibrinogenemia.

COMMENT

Dysfibrinogenemia is a rare but important cause of inherited bleeding and thrombosis. Bleeding is due to fibrinogen mutations that inhibit fibrinopeptide release or fibrin monomer polymerization. Thrombosis can be due to mutations that inhibit either the anticoagulant or profibrinolytic functions of fibrin. In many cases, the pathogenesis of thrombosis is unknown.

Laboratory testing is critical for accurate diagnosis. The thrombin time and reptilase time are used for screening suspected cases. An important caveat is that these tests are susceptible to a high rate of false positivity due to their nonspecificity. The fibrinogen activity-antigen ratio is use-

ful for confirmation in most cases. Liver function testing and family studies can confirm an acquired etiology. More complex testing by specialized laboratories, such as fibrinogen protein electrophoresis and fibrinogen gene analysis, can provide a more definitive diagnosis of an inherited etiology.

This article was prepared as part of a College of American Pathologists Coagulation Resource Committee project focusing on the laboratory evaluation of coagulation disorders.

References

- Mosesson MW. Fibrinogen structure and fibrin clot assembly. *Semin Thromb Hemost.* 1998;24:169-174.
- Mosesson MW. The roles of fibrinogen and fibrin in hemostasis and thrombosis. *Semin Hematol.* 1992;29:177-188.
- Doolittle RF. Fibrinogen and fibrin. *Annu Rev Biochem.* 1984;53:195-229.
- Haverkate F, Samama M. Familial dysfibrinogenemia and thrombophilia: report on a study of the SSC Subcommittee of Fibrinogen. *Thromb Haemost.* 1995;73:151-161.
- Gralnick HR, Connaghan DG. Hereditary abnormalities of fibrinogen. In: Beutler E, Lichtman MA, Coller BS, Kipps TJ. *Williams Hematology.* 5th ed. New York, NY: McGraw-Hill; 1995:1439.
- Ebert R. *Index of Variant Human Fibrinogens.* Boca Raton, Fla: CRC Press; 1994.
- Galanakis DK. Inherited dysfibrinogenemia: emerging abnormal structure associations with pathologic and nonpathologic dysfunctions. *Semin Thromb Hemost.* 1993;19:386-395.
- Cote HC, Lord ST, Pratt KP. Gamma-chain dysfibrinogenemias: molecular structure-function relationships of naturally occurring mutations in the gamma chain of human fibrinogen. *Blood.* 1998;92:2195-2212.
- Mosesson MW. Dysfibrinogenemia and thrombosis. *Semin Thromb Hemost.* 1999;25:311-319.
- Reganon E, Vila V, Aznar J, Garrido G, Amparo E, Berenguer J. Study of the formation of fibrin clot in cirrhotic patients: an approach to study of acquired dysfibrinogenemia. *Thromb Res.* 1987;46:705-714.
- Francis JL, Armstrong DJ. Acquired dysfibrinogenemia in liver disease. *J Clin Pathol.* 1982;35:667-672.
- Martinez J, Palascak JE, Kwasniak D. Abnormal sialic acid content of the dysfibrinogenemia associated with liver disease. *J Clin Invest.* 1978;61:535-538.
- Levy J, Pettei MJ, Weitz JI. Dysfibrinogenemia in obstructive liver disease. *J Pediatr Gastroenterol Nutr.* 1987;6:967-970.
- Ashby MA, Lazarchick J. Case report: acquired dysfibrinogenemia secondary to mithramycin toxicity. *Am J Med Sci.* 1986;292:53-55.
- von Felton A, Straub PW, Fricj PG. Dysfibrinogenemia in a patient with primary hepatoma: first observation of an acquired abnormality of fibrin monomer polymerization. *N Engl J Med.* 1969;280:405-409.
- Gralnick HR, Givelber H, Abrams E. Dysfibrinogenemia associated with hepatoma: increased carbohydrate content of the fibrinogen molecule. *N Engl J Med.* 1978;299:221-226.
- Ballard JO, Kelly GA, Kukrika MD, Sanders JC, Eyster ME. Acquired dysfibrinogenemia in a hemophiliac with hepatoma: resolution of fibrinogen dysfunction following chemotherapy. *Cancer.* 1981;48:686-690.
- Dawson NA, Barr CF, Alving BM. Acquired dysfibrinogenemia: paraneoplastic syndrome in renal carcinoma. *Am J Med.* 1985;78:682-686.
- Martinez J, Keane PM, Gilman PB, Palascak JE. The abnormal carbohydrate composition of the dysfibrinogenemia associated with liver disease. *Ann N Y Acad Sci.* 1983;408:388-396.
- Martinez J, MacDonald KA, Palascak JE. The role of sialic acid in the dysfibrinogenemia associated with liver disease: distribution of sialic acid on the constituent chains. *Blood.* 1983;61:1196-1202.
- Dang CV, Shin SK, Bell WR, Nagaswami C, Weisel JW. Fibrinogen sialic acid residues are low affinity calcium-binding sites that influence fibrin assembly. *J Biol Chem.* 1989;264:15104-15108.
- Herbert JM, Bernat A, Chatenet-Duchene L. Effect of ciprofibrate on fibrinogen synthesis in vitro on hepatoma cells and in vivo in genetically obese Zucker rats. *Blood Coagul Fibrinolysis.* 1999;10:239-244.
- Lee SY, Lee KP, Lim JW. Identification and biosynthesis of fibrinogen in human uterine carcinoma cells. *Thromb Haemost.* 1996;75:466-470.
- Rybarczyk BJ, Simpson-Haidaris PJ. Fibrinogen assembly, secretion, and deposition into extracellular matrix by MCF-7 human breast carcinoma cells. *Cancer Res.* 2000;60:2033-2039.
- Mammen EF. Coagulation defects in liver disease. *Med Clin North Am.* 1994;78:545-554.
- Harrison RL, Birotte R. The thrombin clotting time. Evaluation of Thromboquik, a commercial thrombin reagent, and observations on sensitivity and on centrifugation. *Am J Clin Pathol.* 1988;89:81-87.
- Blomback B. Studies on the action of thrombinic enzymes on bovine fibrinogen as measured by N-terminal analysis. *Arkiv Kemi.* 1958;12:321-335.
- Holleman WH, Weiss LJ. The thrombin-like enzyme from *Bothrops atrox* snake venom: properties of the enzyme purified by affinity chromatography on p-aminobenzamide-substituted agarose. *J Biol Chem.* 1976;251:1663-1669.
- McDonagh J. Dysfibrinogenemia and other disorders of fibrinogen struc-

ture or function. In: Colman RW, Hirsh J, Marder VJ, Clowes AW, George JN, eds. *Hemostasis and Thrombosis: Basic Principles and Clinical Practice.* 4th ed. Philadelphia, Pa: Lippincott Williams & Wilkins; 2001:877.

- Kramer B, Anders O, Nagel HR, Burstein C, Steiner M. Screening of dysfibrinogenemia using the fibrinogen function versus antigen ratio. *Thromb Res.* 1994;76:577-579.
- National Committee for Clinical Laboratory Standards. *Procedure for the Determination of Fibrinogen in Plasma.* Approved guideline. Villanova, Pa: National Committee for Clinical Laboratory Standards; 1994. NCCLS document H30-A.
- De Cristofaro R, Landolfi R. Measurement of plasma fibrinogen by the prothrombin-time derived method: applicability and limitations. *Blood Coagul Fibrinolysis.* 1998;9:251-259.
- Desvignes P, Bonnet P. Direct determination of plasma fibrinogen levels by heat precipitation: a comparison of the technique against thrombin clottable fibrinogen with spectrophotometry and radial immunodiffusion. *Clin Chim Acta.* 1981;110:9-17.
- Dintenfass L, Kammer S. Re-evaluation of heat precipitation method for plasma fibrinogen estimation: effect of abnormal proteins and plasma viscosity. *J Clin Pathol.* 1976;29:130-134.
- Rampling MW, Gaffney PJ. The sulphite precipitation method for fibrinogen measurement: its use on small samples in the presence of fibrinogen degradation products. *Clin Chim Acta.* 1976;16:43-52.
- Rosenson RS, Tangney CC, Hafner JM. Intraindividual variability of fibrinogen levels and cardiovascular risk profile. *Arterioscler Thromb.* 1994;14:1928-1932.
- De Bacquer D, De Backer G, Braekman L, Baele G. Intra-individual variability of fibrinogen levels. *J Clin Epidemiol.* 1997;50:393-399.
- Bovill EG, McDonagh J, Triplett DA, et al. Performance characteristics of fibrinogen assays: results of the College of American Pathologists Proficiency Testing Program 1988-1991. *Arch Pathol Lab Med.* 1993;117:58-66.
- Palascak JE, Martinez J. Dysfibrinogenemia associated with liver disease. *J Clin Invest.* 1977;60:89-95.
- Yoshida N, Hirata H, Imaoka S, Matsuda M, Yamazumi K, Asakura S. Effect of calcium on the mobility of γ -chain from fibrinogen Osaka V on sodium dodecyl sulfate-polyacrylamide gel electrophoresis. *Thromb Res.* 1994;73:79-82.
- Polack B, Valiron O, Concord E, Freyssinet JM, Hudry-Clergeon G. Molecular characterization of abnormal fibrinogen by two-dimensional electrophoresis. *Clin Chem.* 1984;30:2093-2097.
- Gastineau DA, Gertz MA, Daniels TM, Kyle RA, Bowie EJ. Inhibitor of the thrombin time in systemic amyloidosis: a common coagulation abnormality. *Blood.* 1991;77:2637-2640.
- Herrman JP, Suryapranata H, den Heijer P, Gabriel L, Kutryk MJ, Serruys PW. Argatroban during percutaneous transluminal coronary angioplasty: results of a dose-verification study. *J Thromb Thrombolysis.* 1996;3:367-375.
- Flaherty MJ, Henderson R, Wener MH. Iatrogenic immunization with bovine thrombin: a mechanism for prolonged thrombin times after surgery. *Ann Intern Med.* 1989;111:631-634.
- Lawson JH, Pennell BJ, Olson JD, Mann KG. Isolation and characterization of an acquired antithrombin antibody. *Blood.* 1990;76:2249-2257.
- Banninger H, Hardegger T, Tobler A, et al. Fibrin glue in surgery: frequent development of inhibitors of bovine thrombin and human factor V. *Br J Haematol.* 1993;85:528-532.
- Carr ME, Gabriel DA. Dextran-induced changes in fibrin fiber size and density based on wavelength dependence of gel turbidity. *Macromolecules.* 1980;13:1473-1477.
- Lindblad B, Bergqvist D, Hallbook T, Lindhagen A, Hedner U. Postoperative haemostatic changes in patients given thromboembolic prophylaxis with dextran 70—alone, or in combination with dihydroergotamine. *Acta Chir Scand.* 1984;150:525-529.
- Penner JA. Experience with a thrombin clotting time assay for measuring heparin activity. *Am J Clin Pathol.* 1974;61:645-653.
- Walenga JM, Hoppensteadt D, Koza M, Pifarre R, Fareed J. Comparative studies on various assays for the laboratory evaluation of r-hirudin. *Semin Thromb Hemost.* 1991;17:103-112.
- Laposata M, Green D, Van Cott EM, Barrowcliffe TW, Goodnight SH, Soslilik RC. College of American Pathologists Conference XXXI on laboratory monitoring of anticoagulant therapy: the clinical use and laboratory monitoring of low-molecular-weight heparin, danaparoid, hirudin and related compounds, and argatroban. *Arch Pathol Lab Med.* 1998;122:799-807.
- Strauss RG, Stump DC, Henriksen RA, Saunders R. Effects of hydroxyethyl starch on fibrinogen, fibrin clot formation, and fibrinolysis. *Transfusion.* 1985;25:230-234.
- Kane KK. Fibrinolysis: a review. *Ann Clin Lab Sci.* 1984;14:443-449.
- Arnesen H. Studies on the thrombin clotting time, II: the influence of fibrin degradation products. *Scand J Haematol.* 1973;10:291-297.
- Belitser VA, Lugovskoy EV, Musjalkovskaja AA, Gogolinskaja GK. Quantitation of the inhibitory effect of fibrinogen and its degradation products on fibrin polymerization. *Thromb Res.* 1982;27:261-269.
- Budzynski AZ, Olexa SA, Brizuela BS. The interference of plasmic degradation products of human crosslinked fibrin with clot formation. *Biochim Biophys Acta.* 1979;584:284-287.
- Carr ME, Gabriel DA. Hyperfibrinogenemia as a cause of prolonged thrombin clotting time. *South Med J.* 1986;79:563-570.

58. Al-Mondhiry H, Ehmann WC. Congenital afibrinogenemia. *Am J Hematol*. 1994;46:343–347.

59. Galanakis DK, Ginzler EM, Fikrig SM. Monoclonal IgG anticoagulants delaying fibrin aggregation in two patients with systemic lupus erythematosus (SLE). *Blood*. 1978;52:1037–1046.

60. Wisloff F, Michaelsen TE, Kierulf P, Godal HC. The molecular localization of the ability of certain monoclonal immunoglobulins to interfere with fibrin polymerization. *Thromb Res*. 1985;40:473–482.

61. Colwell NS, Tollefson DM, Blinder M. Identification of a monoclonal thrombin inhibitor associated with multiple myeloma and a severe bleeding disorder. *Br J Haematol*. 1997;97:219–226.

62. Belleville J, Baguet J, Paul J, Clendinnen G, Eloy R. In vitro study of the inhibition of coagulation induced by different radiocontrast molecules. *Thromb Res*. 1985;38:149–162.