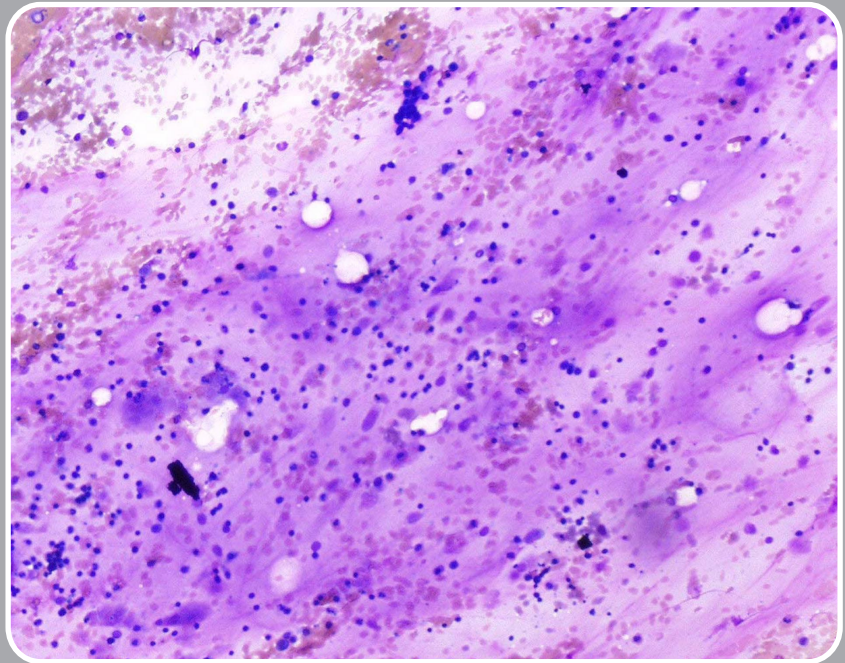


**A 25-year-old white female with a history of an eating disorder presented with pancytopenia. Hematopoietic elements including erythroid precursors and megakaryocytes can be recognized in addition to a few fat cells.**

# Anorexia nervosa: marrow morphology



● John Lazarchick, Children's Hospital of the Medical University of South Carolina

**A** 25-year-old white female with a history of an eating disorder presented with pancytopenia. Hematopoietic elements including erythroid precursors and megakaryocytes can be recognized in addition to a few fat cells. The amorphous material represents deposit of hyaluronic acid with gelatinous transformation of the marrow. (Wright-Giemsa stain, 10× magnification)



The above image was first published in the **ASH IMAGE BANK**, a reference and teaching tool that is continually updated with new atlas images and images of case studies. For more information or to contribute to the Image Bank, visit [www.ashimagebank.org](http://www.ashimagebank.org).