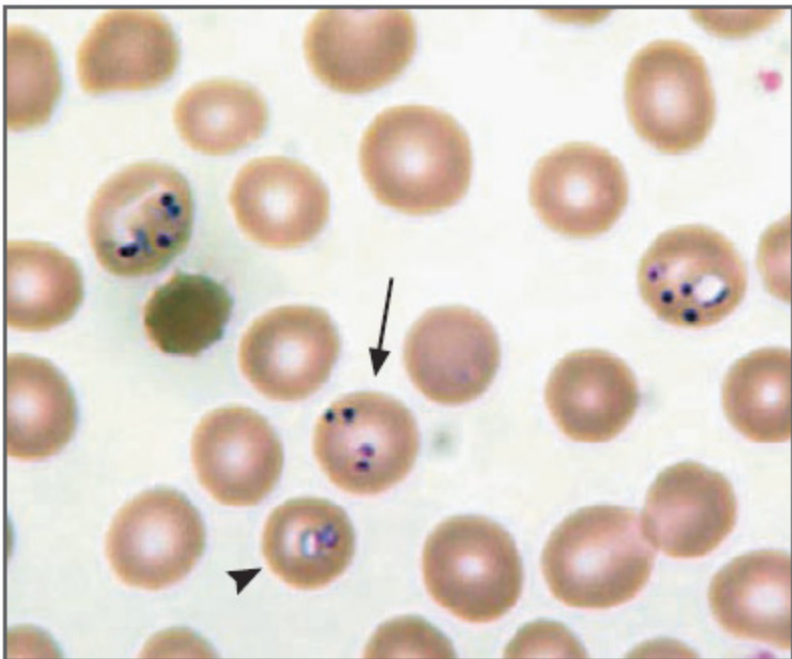




**What is the diagnosis?**



**Figure 1.** Peripheral-Blood Smear Showing Hyperchromic Red Cells Lacking Central Pallor, Howell-Jolly Bodies, and Multiple Intraerythrocytic Ring Forms (Wright-Giemsa Stain).

The arrowhead indicates a Howell-Jolly body, and the arrow indicates a red cell with four ring forms, a finding consistent with babesia.